

ESR Bell Signals

Factory Sealed

Cl. I, Div. 1 & 2, Groups B,C,D
 Cl. II, Div. 1, Groups E,F,G
 Cl. II, Div. 2, Groups F,G
 Cl. III

Explosionproof
 Dust-Ignitionproof
 Raintight
 Wet Locations

3A

Application:

ESR bell signals are used:

- for call signals, alarms, or in various other signalling applications
- in specific hazardous atmospheres such as in chemical plants, oil and gas refineries, bulk loading stations, paint and varnish manufacturing plants, grain processing industries and grain elevators, as well as in certain metal, coal, combustible fiber processing or handling areas
- in conduit systems, and mounted on a vertical flat surface with the striker at the bottom

Features:

- The conduit hub contains an integral bushing.
- The body cover assembly permits the location of a hub at the top, bottom or either side (the striker must be located at the bottom for proper operation).
- There are no external seals required except when used in Group B hazardous areas.
- The ac signal does not have arcing contacts.
- Binding screw terminals are provided in ac signals for supply conductors.
- A vibrating or single stroke striker mechanism is furnished with 6 or 10 inch diameter gongs.

Standard Materials:

- Body – *Feraloy*® iron alloy
- Cover – copper-free aluminum
- Junction box – body – *Feraloy* iron alloy
 – cover – copper-free aluminum
- Gong – steel

Standard Finishes:

- *Feraloy* iron alloy – electrogalvanized and aluminum acrylic paint
- Aluminum – natural
- Steel – gray matte

Size Ranges:

- Hub – one 3/4" size

Sound Levels:

- See page 574 for individual ratings

Electrical Rating Ranges:

- Nominal voltage – 12, 24, 48, 115, 230 ac
- See Table 1 (page 574) for complete ratings.

Certifications and Compliances:

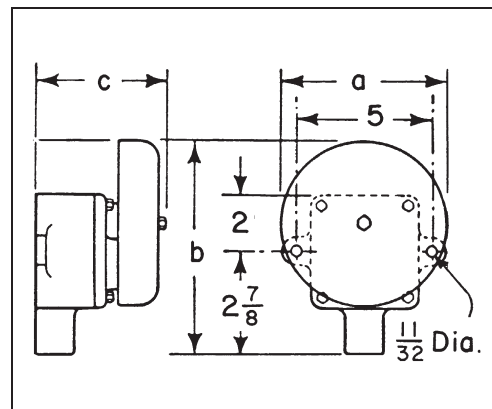
- Standard Units:
 - NEC/CEC:
 - Class I, Division 1 & 2, Groups C,D
 - Class II, Division 1, Groups E,F,G
 - Class II, Division 2, Groups F,G
 - Class III
 - NEMA/EEMAC: 7CD,9EFG
 - UL Standard: 464, 1203
 - CSA Standard: C22.2 No. 30
- Group B Units:
 - NEC/CEC:
 - Class I, Division 1 & 2, Groups B,C,D
 - Class II, Division 1, Groups E,F,G
 - Class II, Division 2, Groups F,G
 - Class III
 - NEMA/EEMAC: 7BCD,9EFG
 - UL Standard: 464, 1203
 - CSA Standard: C22.2 No. 30



ESR bell signal for AC

Dimensions (in inches)

Dimensions are approximate, not for construction purposes.



Dia. Gong	a	b	c
6	6	6 ³ / ₄	5 ¹ / ₄
10	10	10 ³ / ₄	6

3A Signals & Alarms

3A ESR Bell Signals

Factory Sealed

Cl. I, Div. 1 & 2, Groups B,C,D Explosionproof
 Cl. II, Div. 1, Groups E,F,G Dust-Ignitionproof
 Cl. II, Div. 2, Groups F,G Raintight
 Cl. III Wet Locations
 NEMA 7BCD,9EFG

Table 1/Operating Current in Amperes at the Nominal Voltage For Bell Signals

Nom. Volts	Amperes	
	All Vibrating 25 to 60 hertz AC	All Single Stroke 50 to 60 hertz AC
12	1.67	1.75
24	.53	.62
48	.44	.41
115	.189	.189
230	.092	.086

Bell Signals

Hub Size	Supply	Nom. Volts	Voltage Range	Dia. Bell	Vibrating Hammer (25 to 60 hertz)		Minimum audibility rating (dB) at 10':	Single Stroke Hammer (50 to 60 hertz) Cat. #	Minimum audibility rating (dB) at 10':
					Standard Units Cat. #	Group B Units‡ Cat. #			
3/4	AC	12	9.6 to 13.2	6	ESR2675	ESR2675-GB	67	ESR2665	64
		24	19.2 to 26.4		ESR2674	ESR2674-GB	82	ESR2664	64
		48	38.4 to 52.8		ESR2673	ESR2673-GB	88	ESR2663	67
		115	92 to 126.5		ESR2672	ESR2672-GB	88	ESR2662	67
		230	184 to 253		ESR2671	ESR2671-GB	85	ESR2661	67
	10	12	9.6 to 13.2	10	ESR2615	ESR2615-GB	82	ESR2625	64
		24	19.2 to 26.4		ESR2614	ESR2614-GB	85	ESR2624	64
		48	38.4 to 52.8		ESR2613	ESR2613-GB	85	ESR2623	67
		115	92 to 126.5		ESR2612	ESR2612-GB	91	ESR2622	67
		230	184 to 253		ESR2611	ESR2611-GB	85	ESR2621	67

‡ Install seal within 1 1/2" of conduit opening.